

SOLOCRET-15

Anti-sag smoothing compound – rapid hardening



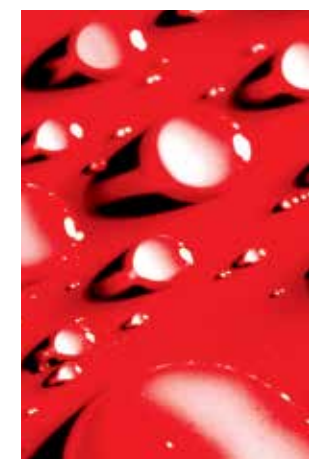
Technical Data:

Basis:	Special cement, aggregate, high quality additives
Flexural and compressive strength*:	4.0 N/mm ² /25 N/mm ² after 28 days
Application temperature:	+5 °C to +25 °C
Pot life*:	min. 30 mins
Water addition:	4.75–5.0 l water : 25 kg SOLOCRET-15 1.1–1.3 l water : 6 kg SOLOCRET-15
Consumption:	approx. 1.5 kg/m ² /mm thickness
Foot traffic*/ Ready for finishes*:	after approx. 4 hrs
Foot traffic*:	after approx. 7 day
Packaging:	25 kg plastic bag

*) Values are valid at +23° C and 50% relative humidity.

Areas of application:

- SOLOCRET-15 is a rapid hardening, highly slump resistant smoothing compound for use at thicknesses from 2-20 mm in one application for preparing substrates before the subsequent installation of ceramic tiles and slabs, natural and artificial stone as well as other finishes, including over underfloor heating.
- SOLOCRET-15 can be used on suitable substrates such as e.g. mineral-based substrates; concrete to DIN 1045, heated and unheated cement-based screeds to DIN 18560, cement-based renders, old well adhered tiled finishes and rapid setting cement-based screeds.
- SOLOCRET-15 is suitable for exterior and wet duty areas when an appropriate SCHOMBURG bonded waterproof membrane is installed.



SCHOMBURG GmbH & Co. KG
 Aquafinstraße 2–8
 D-32760 Detmold (Germany)
 phone +49-5231-953-00
 fax +49-5231-953-108
 email export@schomburg.de
 www.schomburg.com

SOLOCRET-15



Anti-sag smoothing compound – rapid hardening

Properties:

- For thicknesses from 2 - 20 mm in one application
- Rapid hardening
- Low shrinkage
- Smooth and easy application
- For interior and exterior use
- For walls, ceilings and floors



CE	
SCHOMBURG GmbH & Co. KG Aquafinstraße 2-8 D-32760 Detmold 13 2 05437	
EN 13813 SOLOCRET-15 Cement screed mortar for application in buildings CT-C25-F4	
Reaction to fire:	A1/A1 _{fl}
Release of corrosive substances:	CT
Compressive strength:	C25
Flexural strength:	F4

Product application:

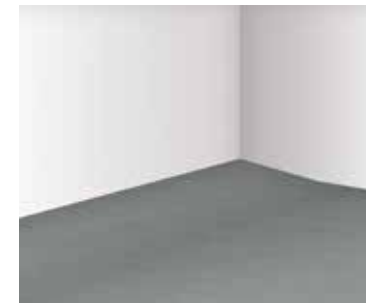
Prime the substrate with ASO®-Unigrund. Mix SOLOCRET-15 at a ratio of approx. 4.75-5.0 l water : 25 kg SOLOCRET-15 with clean water in a clean mixing bucket with a suitable drill mixer for approx. 3-5 minutes until homogenous. After standing for approx. 5 mins, stir through once again. Do not mix more material than can be used within 30 minutes.

Skim/spread out the properly mixed SOLOCRET-15 onto the primed substrate and distribute evenly with a suitable tool (lath) within the pot life. SOLOCRET-15 can be applied over the area up to 20 mm in one application. After approx. 60 - 90 minutes dependent on the substrate, ambient temperature and thickness, rub with a damp open-pored sponge or felt-board and subsequently smooth with a steel float. Possible further smoothing is best carried out when the first layer has hardened but is still recognisably damp from the dark colour. Do not exceed the maximum thickness of 20 mm.

Application:

The substrate must be dry, load-bearing, adequately flat, free from penetrating cracks and free from separating substances such as e.g. oil, paints, laitance layers and loose components. It must have a largely closed texture and possess surface characteristics and strength typical for its type. Prime absorbent substrates with ASO®-Unigrund. Heat substrates with underfloor heating before applying finishes. The readiness of a substrate to receive finishes is to be determined using the carbide (CM) method and may not fall below the following values:

- CT ≤ 2.0 %
- CA/ CFA unheated ≤ 0.5 %, heated ≤ 0.3 %



1 Load-bearing substrate



2 Cleaning the wall substrate



3 Priming the substrate, e.g. with ASO®-Unigrund



4 Adding the smoothing compound to the pre-weighed water



5 Mixing the smoothing compound



6 Levelling uneven areas in walls



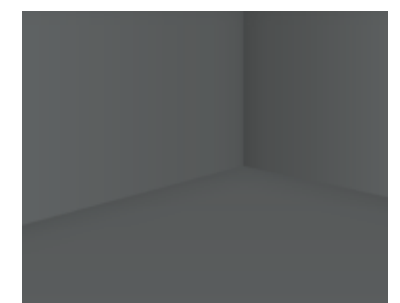
7 Cleaning the floor substrate



8 Priming the substrate, e.g. with ASO®-Unigrund



9 Levelling and/or creating falls in the floor



10 Even walls and floor ready to receive finishes