

Integral waterproofing for concrete

BETOCRETE[®]-C series

Powerful and
invincible.

The new liquid and powder-based
concrete additives for crystalline
waterproofing with 2-in-1 technology.

Problems Solved.



Safe protection against water and corrosion. **Double the power for waterproof and protect concrete.**

Waterproofing, above all in larger structures, is of great significance to the longevity and reliability of concrete. The new, improved BETOCRETE®-C products are a powerful adversary to the penetration of water.

The extreme effectiveness relies on the innovative 2-in-1 technology: crystal forming ingredients produce millions of nano-crystals, blocking the flow of water and completely filling the capillary pores in the concrete. At the same time it provides

additional technology for even greater safety, dependent on the product. A further decisive advantage of the double effect technology: additional waterproofing measures are superfluous in most cases.

The 2-in-1 technology

Crystalline technology

Reduces water penetration through the formation of nano-crystals.



Additive technology

Waterproofing agent

Additionally minimises the penetration and absorption of water.

Corrosion inhibitor

Coats the reinforcement and consequently protects the steel reinforcement.

Plasticizer/flow aid

Reduces the w/c value and consequently reduces the penetration depth of water through the reduction of the capillary pore structure.



Waterproofing agent

reduces water penetration!



Corrosion protection

by coating the steel



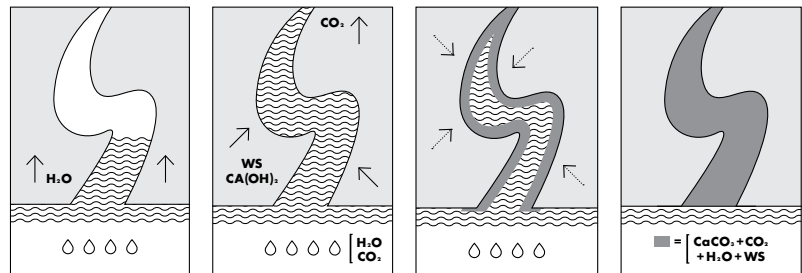
Plasticizer

Reduction in the capillary pore structure!

The advantages of the BETOCRETE[®]-C products

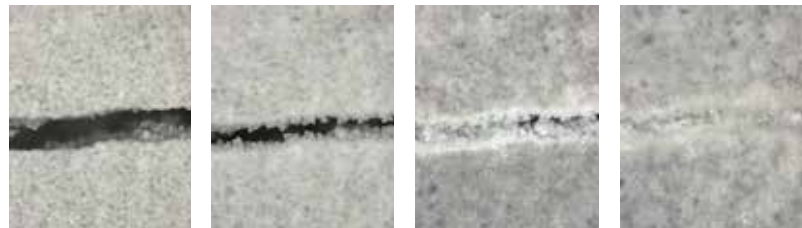
Reduction in water penetration

The use of BETOCRETE[®]-C products reduces water penetration by up to 80%. Independent testing institutes of renowned concrete producers themselves show, for water impermeable concrete formulas with a mean penetration of 25 mm, a reduction to 5 mm. The water vapour permeability is also lowered by around 10 times.



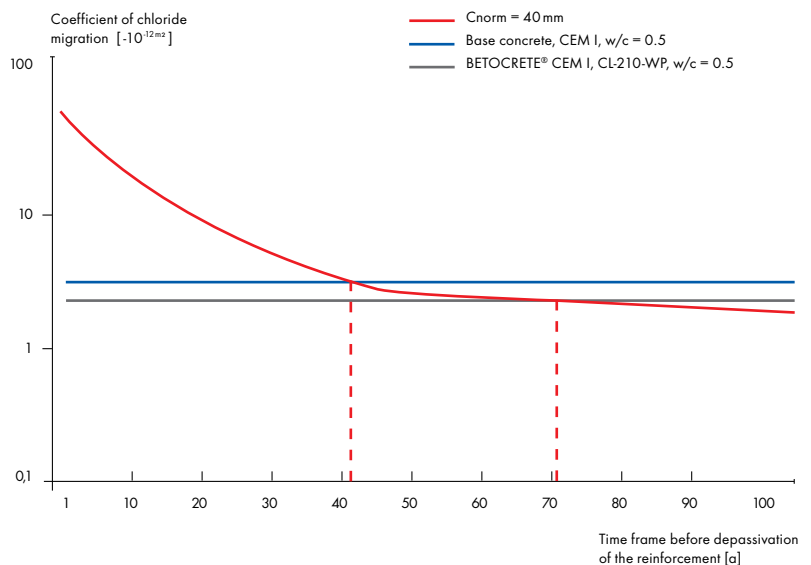
“Self healing” concrete

With each new contact with water, the active ingredients form new crystals - and still carry on after many years. Extensive tests show that products in the BETOCRETE[®]-C series are capable of achieving an auto-reactive, crack-healing function with outwardly spreading cracks up to 0.5 mm and continuous cracks up to 0.4 mm. This lowers the repair costs of the building.



Extending the longevity

Waterproofing with BETOCRETE[®]-C products can extend the life-span of buildings by up to 75%. The time until depassivation of reinforced concrete can be delayed by up to 30 years. An increased return on investment!



Powder based and liquid products **You only have these choices with SCHOMBURG.**

As a leading provider, in addition to those conventionally marketed powder products, SCHOMBURG also offers liquid crystalline products, which are certified to EN 934-2. This simplifies dosage and gives maximum certainty when mixing.

Simple dosage has especially proven itself on large volume building projects. Even greater advantages regarding application certainty and speed are offered by automated dosing plants.



Crystalline technology

Hydrophilic function

- Reaction between in-situ moisture, the excess calcium hydroxide in the cement and BETOCRETE®-C.
- Needle form crystallisation of the capillaries and cracks up to 0.5 mm possible.



Additive technology

Hydrophobic function (WP)

Prevents additional penetration and absorption of water.

Protective function (CI)

The reinforcement is protected and consequently the most sensitive component of the concrete, the steel is secured against corrosion.

Plasticizing function (P, S)

A plasticizer can lower the w/c value and consequently the penetration depth of water by reducing the size of the capillary pores.



Liquid products (CL)

BETOCRETE®

CL-210-WP

Waterproofing agent

BETOCRETE®

CL-170-P

Plasticizer
Reduction of the w/c value

BETOCRETE®

CL-180-S

Flow aid
Strong reduction in the w/c value

Powder-based products (CP)

BETOCRETE®

CP-360-WP

Waterproofing agent

BETOCRETE®

CP-355-CI

Low Portland cement formula

BETOCRETE®

CP-380-S

Flow aid
Strong reduction in the w/c value

BETOCRETE®

CP-350-CI

Standard concrete



Integral waterproofing for concrete

Areas of application for the BETOCRETE[®]-C series: **Safety for your grand plans.**

Do you wish for support in creating the correct formulas, for site advice, for site supervision when carrying out preliminary trials or general site support? The certified BETOCRETE[®] Concrete Testing Laboratory is readily available to you.

Contact

SCHOMBURG GmbH & Co. KG

Aquafinstraße 2 - 8

D-32760 Detmold (Germany)

phone +49-5231-953-00

fax +49-5231-953-108

betocrete@schomburg.de

www.schomburg.com

Areas of application

The BETOCRETE®-C series is the first choice for all structures, which come into contact with water, especially for large constructions. The products match to the most variety of applications and are compatible with established construction methods for structures within the ground and in contact with water.

Collecting and retaining basins



Parking garages and car park levels



Swimming pools directly in the ground



Power station cooling towers



Foundations



Tunnels and concrete pipes



Tanks and containers



Sewage ducts and shafts



Retaining dams



The SCHOMBURG Group develops, produces and markets high quality building product systems for

- Construction waterproofing
- Construction restoration
- Tiles/natural stone installation
- Screed installation
- Civil engineering
- Surface protection
- Concrete technology

SCHOMBURG is recognised for its development competency and is distinguished both nationally and internationally with over 75 years in the market. System based construction products from its own production plants are held in high esteem throughout the world.

Industry professionals value the level of service provided by the SCHOMBURG Group, along with our large range of high quality products.

In order to stay at the forefront of a continuously advancing market we are always investing in research and development of new and current products. This guarantees high quality products, which in turn leads to customer satisfaction.

SCHOMBURG GmbH & Co. KG
Aquafinstrasse 2 - 8
D-32760 Detmold (Germany)
phone +49-5231-953-00
fax +49-5231-953-108
email export@schomburg.de
www.schomburg.com

